



The Cozumel



The Cozumel

Model number: 34MVP28563AH18

3 beds • 2 baths • 1568 sq.ft. • 28' width • 56' depth

Our home building facilities invest in continuous product and process improvements. Plans, dimensions, features, materials, specifications and availability are subject to change without notice or obligation. Renderings and floor plans are representative likenesses of our homes and may differ from the actual homes. We invite you to tour a Home Center near you and inspect the highest value in quality housing available or call (423) 899-0055 to speak with a Home Consultant. Copyright 2017, CMH. All rights reserved.

<https://www.claytonhomeschattanooga.com>

**CLAYTON HOMES-EAST
RIDGE**

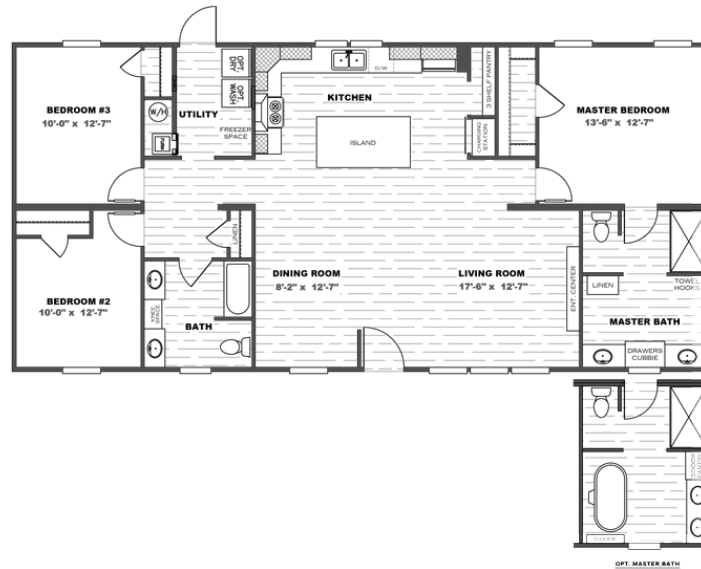
**5501 RINGGOLD ROAD
EAST RIDGE, TN 37412**

Monday - Thursday: 9am to 6pm
Friday: 9am to 6pm
Saturday: 9am to 5pm
Sunday: Closed

(423) 899-0055



The Cozumel



The Cozumel

Model number: 34MVP28563AH18

3 beds • 2 baths • 1568 sq.ft. • 28' width • 56' depth

Our home building facilities invest in continuous product and process improvements. Plans, dimensions, features, materials, specifications and availability are subject to change without notice or obligation. Renderings and floor plans are representative likenesses of our homes and may differ from the actual homes. We invite you to tour a Home Center near you and inspect the highest value in quality housing available or call (423) 899-0055 to speak with a Home Consultant. Copyright 2017, CMH. All rights reserved.

<https://www.claytonhomeschattanooga.com>

**CLAYTON HOMES-EAST
RIDGE**

**5501 RINGGOLD ROAD
EAST RIDGE, TN 37412**

Monday - Thursday: 9am to 6pm
Friday: 9am to 6pm
Saturday: 9am to 5pm
Sunday: Closed

(423) 899-0055